

Chapter 5 Concept of Multimedia

Adobe Photoshop

There are numerous programs to edit photo in computer. Of these programs, Photoshop is popular worldwide. Brightening or darkening the entire or a part of picture, designing cover of a book with several pictures, making posters, cutting off the irrelevant part of the picture, erasing botchy marks on the pictures, etc. can easily be done by Photoshop.

To open Photoshop program

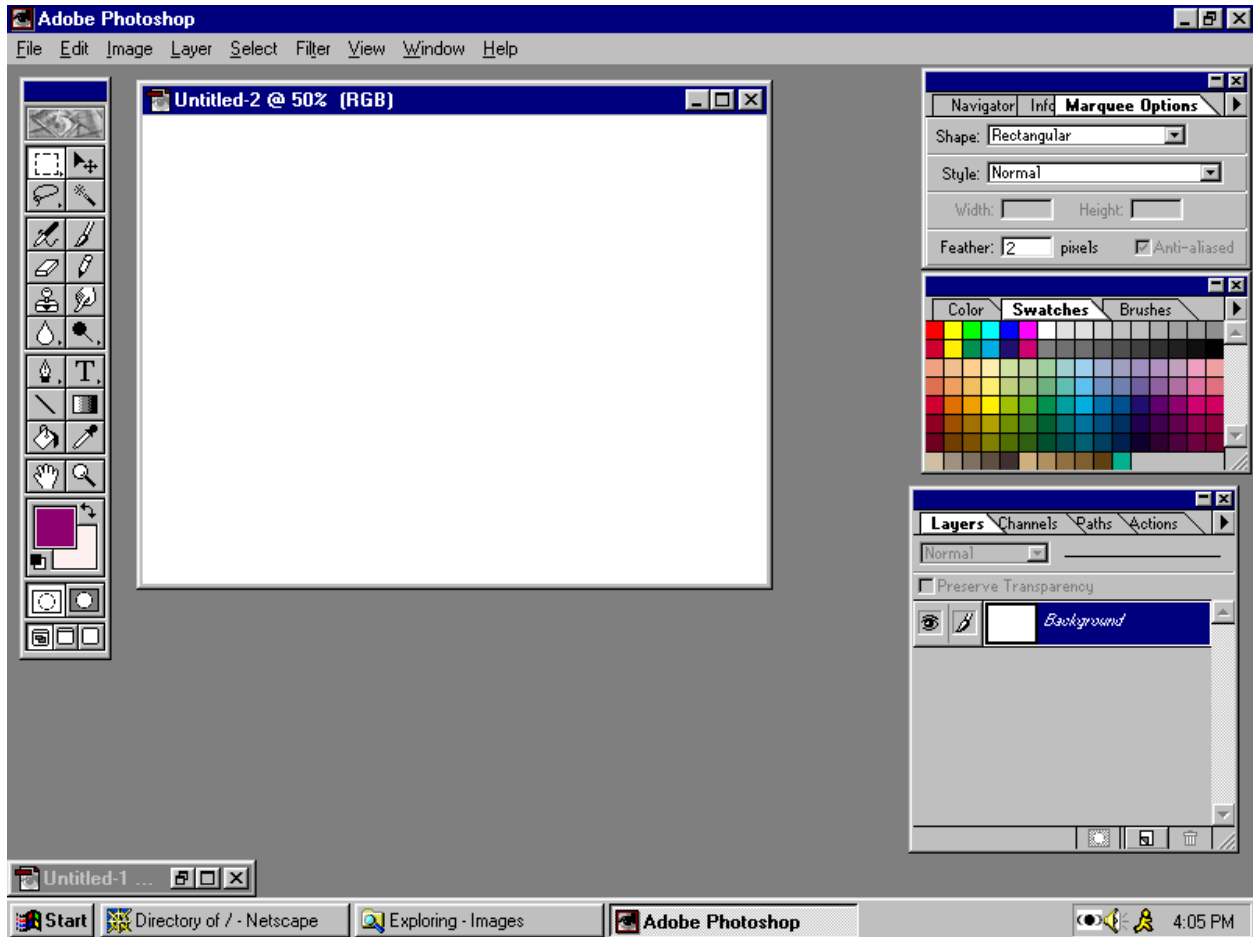
1. Click **start or windows Logo** Button and place the mouse pointer on '**All Programs**' command, and get a Fly out menu.
2. Click Adobe Photoshop Programs, from this menu and 'Adobe Photoshop' will open.

To prepare new file in Photoshop program

1. Click 'New' from menu after opening up the Photoshop program, and get 'New' dialogue box.
2. You will get 'Untitled-1' selected in the 'Name' of dialogue box.
3. In the box 'width' and 'height', type numbers on the measuring unit 'inch'.
4. The Resolution, for example, 72 pixel, is kept unchanged.

Images or pictures are created in Photoshop by **pixels**. **Pixel is the smallest square unit of image**. 72 pixels per inch mean crossing 72 lines vertically and horizontally in per inch space. **The total number of pixels in one square inch is called resolution**. If 130 is typed in the box of pixel, the resolution will be $130*130=16900$. **If an image is enlarged, the pixels could be visible. This view is called pixelated or spilt image.**

5. From the dropdown menu of color mode in the dialogue box, RGB, CMYK, Bitmap, Grayscale, from Lab Color RGB can be selected as all the images on the monitors of computer, television, and other electronicmedia are viewed in RGB mode. **RGB is the abbreviation of red, green and blue.**
6. There are three options in the 'Background Contents' of dialogue box. The options are White, Background and Transparent.
7. If '**white**' is selected from the dropdown menu, **the background will be white**. If a **color** is selected from Background toolbox, it will turn into **the color of the canvas**. If **transparent** is selected, the background will be **transparent and checkered**.
8. Without following the steps described above, Default Photoshop Size can be selected from the 'Preset dropdown' list.
9. Completing the measurement of dialogue box, press 'OK'.
10. A window will be viewed as per the measurement given in the dialogue box.
11. Double click on the title bar, and it will be viewed on the screen.
12. The menu bar is located under the title bar and the option bar is below the menu bar.
13. **The ruler is located under the title bar.**
14. The Photoshop work is to be done below the ruler on the screen



The screen can be compared to the canvas of painting of an artist. On the left side of the canvas, there remain brush, color, and different kinds of editing tools, and the palette on the right side.